

Not an  
actual  
patient.

RELY ON



# GILENYA<sup>®</sup> (fingolimod)

TO HELP YOU SAY, "HEY MS, TAKE THIS!"

Take on RRMS with a pill that *cut relapses by more than half*

**YOU COULD HAVE A \$0\* CO-PAY! SEE DETAILS INSIDE**

MS= multiple sclerosis; RRMS=relapsing-remitting multiple sclerosis.

\*Limitations apply. Up to an \$18,000 annual limit. Offer not valid under Medicare, Medicaid, or any other federal or state program. Novartis reserves the right to rescind, revoke, or amend this Program without notice. See complete Terms & Conditions for details at [www.gilenya.com](http://www.gilenya.com).

## INDICATION

GILENYA is a prescription medicine used to treat relapsing forms of multiple sclerosis (MS), to include clinically isolated syndrome, relapsing-remitting disease, and active secondary progressive disease, in adults and children 10 years of age and older.

## IMPORTANT SAFETY INFORMATION

You should not take GILENYA if in the last 6 months you experienced heart attack, unstable angina, stroke or mini-stroke (transient ischemic attack or TIA), or certain types of heart failure. Do not take GILENYA if you have an irregular or abnormal heartbeat (arrhythmia), including a heart finding called prolonged QT as seen on an ECG, or if you take medicines that change your heart rhythm. Do not take GILENYA if you are allergic to fingolimod or any of the other ingredients.

**Please see full Important Safety Information on pages 10-14. Please see full Prescribing Information, including Medication Guide.**



# WHY RELY ON GILENYA<sup>®</sup> (fingolimod)?

It's the once-a-day\* pill that's helped more than 300,000 fight back, including those prescribed GILENYA worldwide and people who participated in clinical studies.

In clinical studies, GILENYA was shown to help adults take on RRMS. Here are 3 key ways GILENYA measured:

- 1** *Cut relapses*
- 2** *Significantly reduced lesions seen on MRI scans*
- 3** *Delayed disability progression*

\*GILENYA can result in a slow heart rate when first taken. You will be observed by a health care professional for at least 6 hours after you take your first dose. You may need to repeat this monitoring if you miss a dose or are a child who is moving to 0.5 mg from the 0.25 mg dose.

MRI=magnetic resonance imaging.

**Please see full Important Safety Information on pages 10-14. Please see full Prescribing Information, including Medication Guide.**

“I AM NOT AFRAID OF RRMS ANY LONGER FOR A FEW REASONS. FIRST AND FOREMOST, GILENYA IS WORKING FOR ME.”

– GILENYA COMMUNITY MEMBER

This community member was paid for their time. Individual results may vary.



[Learn more about GILENYA](#) ▶

## **IMPORTANT SAFETY INFORMATION (cont)**

GILENYA may cause serious side effects such as slow heart rate, especially after first dose. Adults and children will be monitored by a health care professional for at least 6 hours after the first dose or after a child takes the first dose of 0.5mg of GILENYA when switching from 0.25mg daily dose. Your pulse and blood pressure will be checked hourly. You'll get an ECG before and 6 hours after your first dose. If any heart problems arise or your heart rate is still low, you'll continue to be monitored. If you have any serious side effects, especially those that require treatment with other medicines, or if you have certain types of heart problems, or if you're taking medicines that can affect your heart, you'll be watched overnight. If you experience slow heart rate, it will usually return to normal within 1 month. Call your doctor, or seek immediate medical attention if you have any symptoms of slow heart rate, such as dizziness, tiredness, feeling like your heart is beating slowly or skipping beats, or chest pain. Symptoms can happen up to 24 hours after the first dose. Call your doctor if you miss 1 or more doses of GILENYA—you may need to repeat the 6-hour monitoring.

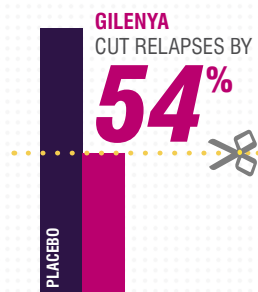
# RESULTS GILENYA<sup>®</sup> (fingolimod) CAN OFFER

## REDUCED RELAPSES

GILENYA was proven to reduce more relapses than placebo, and it's the only oral treatment that was tested and proven to reduce relapses better than 2 other key RRMS treatments.

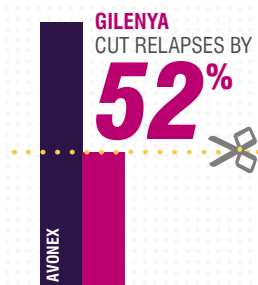
### GILENYA VS PLACEBO

In a 2-year study against placebo, GILENYA reduced the number of relapses by 54%.



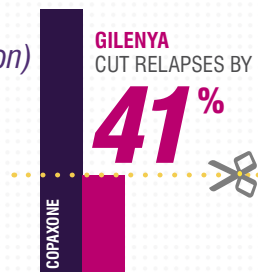
### GILENYA VS AVONEX<sup>®</sup> (interferon beta-1a)

In a 1-year study against Avonex, GILENYA reduced the number of relapses by 52%.

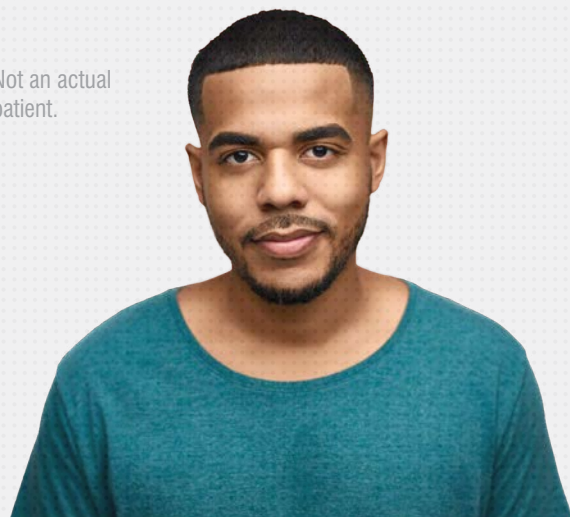


### GILENYA VS COPAXONE<sup>®</sup> (glatiramer acetate injection)

In a 1-year study against Copaxone once daily, GILENYA reduced the number of relapses by 41%.



Not an actual patient.



## PLUS, MORE PEOPLE STAYED RELAPSE-FREE

In a 2-year study vs placebo, more people taking GILENYA stayed relapse-free:



In a 1-year study vs Avonex, more people taking GILENYA stayed relapse-free:



Avonex and Copaxone are registered trademarks of their respective owners.

**IMPORTANT SAFETY INFORMATION (cont)**  
GILENYA may cause serious side effects during pregnancy. Consult your doctor before getting pregnant. You should avoid becoming pregnant while taking GILENYA or in the 2 months after you stop taking it because of the risk of harm to the baby.

Please see full [Important Safety Information](#) on pages 10-14. Please see full [Prescribing Information](#), including [Medication Guide](#).

## REDUCED LESIONS

GILENYA® (fingolimod) reduced 2 key types of lesions seen on MRI in clinical studies.

- Gd+ T1 lesions are areas that are inflamed right now
- T2 lesions are scarring from old and new inflammation that shows how MS affects the brain over time

In a 2-year study, GILENYA:

REDUCED Gd+ T1 LESIONS BY

**82%**

COMPARED WITH PLACEBO

T1: 0.2 FOR GILENYA VS 1.1 FOR PLACEBO

REDUCED NEW OR NEWLY ENLARGING T2 LESIONS BY

**74%**

COMPARED WITH PLACEBO

T2: 2.5 FOR GILENYA VS 9.8 FOR PLACEBO

In a 1-year study vs Avonex, GILENYA reduced Gd+ T1 lesions by 60% (0.2 for GILENYA vs 0.5 for Avonex) and reduced new or newly enlarging T2 lesions by 38% (1.6 for GILENYA vs 2.6 for Avonex).

Gd+=gadolinium enhancing.

**Please see full Important Safety Information on pages 10-14. Please see full Prescribing Information, including Medication Guide.**

## DELAYED DISABILITY PROGRESSION

**82%** OF ADULTS TAKING GILENYA **SHOWED NO DISABILITY PROGRESSION**



COMPARED WITH 76% OF PEOPLE TAKING PLACEBO IN A 2-YEAR STUDY

In a 1-year study against Avonex, there was no significant difference in disability progression.

Disability progression was measured every 3 months using the Expanded Disability Status Scale (EDSS).



**Learn more about how GILENYA was studied and what it's been shown to do**



### IMPORTANT SAFETY INFORMATION (cont)

GILENYA may cause serious side effects such as increased risk of serious infections, some of which could be life threatening and cause death. You should not receive live vaccines during treatment with GILENYA and for 2 months after you stop taking GILENYA. Vaccines may not work as well when given during treatment with GILENYA. Because GILENYA has an increased risk of human papilloma virus (HPV), women should consult their doctor about a routine pap-smear. GILENYA lowers the number of white blood cells (lymphocytes) in your blood. This will usually go back to normal within 2 months of stopping GILENYA. Your doctor may do a blood test to check your white blood cells before you start GILENYA. Call your doctor right away if, while taking GILENYA or for 2 months after your last dose, you have fever, tiredness, body aches, chills, nausea, vomiting, or headache accompanied by fever, neck stiffness, sensitivity to light, nausea, and/or confusion. These may be symptoms of meningitis.

# THE GILENYA<sup>®</sup> (fingolimod) GO PROGRAM<sup>®</sup> **HAS YOUR BACK.**

The *Go Program* is a team of experts here to help you start and stay on GILENYA.

Once your health care professional prescribes GILENYA and submits the Start Form, we start working for you. We can help with:

*Understanding your  
insurance coverage for GILENYA*

*Scheduling pretests and  
your first dose observation*

*Finding out if you're eligible  
for a \$0\* co-pay*

*Answering any questions you  
have at any point during your  
treatment on GILENYA*



**Learn more about getting  
started and how the  
Go Program can help** ▶

Please see full **Important Safety Information** on pages 10-14. Please see full **Prescribing Information, including Medication Guide.**



Not an  
actual  
patient.

## **SIGN UP TO SAVE**

YOU MAY BE ABLE TO PAY AS LITTLE AS

**\$0\* FOR GILENYA<sup>®</sup>**  
(fingolimod)

Visit [support.gilenya.com](http://support.gilenya.com) to learn more, check eligibility and enroll

## ***Ready for some support?***

**Call us at 1-800-GILENYA  
(1-800-445-3692), 8:00 AM–9:00 PM  
ET, Mon–Fri.<sup>†</sup>**

\*Limitations apply. Up to an \$18,000 annual limit. Offer not valid under Medicare, Medicaid, or any other federal or state program. Novartis reserves the right to rescind, revoke, or amend this Program without notice. See complete Terms & Conditions for details at [www.gilenya.com](http://www.gilenya.com).

<sup>†</sup>Excludes public holidays.

## INDICATION

GILENYA® (fingolimod) is a prescription medicine used to treat relapsing forms of multiple sclerosis (MS), to include clinically isolated syndrome, relapsing-remitting disease, and active secondary progressive disease, in adults and children 10 years of age and older.

## IMPORTANT SAFETY INFORMATION

You should not take GILENYA if in the last 6 months you experienced heart attack, unstable angina, stroke or mini-stroke (transient ischemic attack or TIA), or certain types of heart failure. Do not take GILENYA if you have an irregular or abnormal heartbeat (arrhythmia), including a heart finding called prolonged QT as seen on an ECG, or if you take medicines that change your heart rhythm. Do not take GILENYA if you are allergic to fingolimod or any of the other ingredients.

GILENYA may cause serious side effects such as:

- Slow heart rate, especially after first dose. Adults and children will be monitored by a health care professional for at least 6 hours after the first dose or after a child takes the first dose of 0.5mg of GILENYA when switching from 0.25mg daily dose. Your pulse and blood pressure will be checked hourly. You'll get an ECG before and 6 hours after your first dose. If any heart problems arise or your heart rate is still low, you'll continue to be monitored. If you have any serious side effects, especially those that require treatment with other medicines, or if you have certain types of heart problems, or if you're taking medicines that can affect your heart, you'll be watched overnight. If you experience slow heart rate, it will usually return to normal within 1 month. Call your doctor, or seek immediate medical attention if you have any symptoms of slow heart rate, such as dizziness, tiredness, feeling like your heart is beating slowly or skipping beats, or chest pain. Symptoms can happen up to 24 hours after the first dose. Call your doctor if you miss 1 or more doses of GILENYA—you may need to repeat the 6-hour monitoring.

- During pregnancy. Consult your doctor before getting pregnant. You should avoid becoming pregnant while taking GILENYA or in the 2 months after you stop taking it because of the risk of harm to the baby.
- Increased risk of serious infections, some of which could be life threatening and cause death. You should not receive live vaccines during treatment with GILENYA and for 2 months after you stop taking GILENYA. Vaccines may not work as well when given during treatment with GILENYA. Because GILENYA has an increased risk of human papilloma virus (HPV), women should consult their doctor about a routine pap-smear. GILENYA lowers the number of white blood cells (lymphocytes) in your blood. This will usually go back to normal within 2 months of stopping GILENYA. Your doctor may do a blood test to check your white blood cells before you start GILENYA. Call your doctor right away if, while taking GILENYA or for 2 months after your last dose, you have fever, tiredness, body aches, chills, nausea, vomiting, or headache accompanied by fever, neck stiffness, sensitivity to light, nausea, and/or confusion. These may be symptoms of meningitis.
- Progressive multifocal leukoencephalopathy (PML). PML is a rare brain infection that usually leads to death or severe disability. If PML happens, it usually happens in people with weakened immune systems but has happened in people who do not have weakened immune systems. Call your doctor right away if you have any new or worsening symptoms of PML that have lasted several days, including changes in your thinking or memory, changes in your vision, decreased strength, problems with balance, weakness on 1 side of your body, loss of coordination in your arms and legs, confusion, or changes in your personality.
- Macular edema, a vision problem that can cause some of the same vision symptoms as

**Please see full [Important Safety Information](#) on pages 10-14. Please see full [Prescribing Information](#), including [Medication Guide](#).**

## **IMPORTANT SAFETY INFORMATION (cont)**

- an MS attack (optic neuritis), or no symptoms. If it happens, macular edema usually starts in the first 3 to 4 months after starting GILENYA. Your doctor should test your vision before you start GILENYA, 3 to 4 months after you start GILENYA, and any time you notice vision changes. Vision problems may continue after macular edema has gone away. Your risk of macular edema is higher if you have diabetes or have had an inflammation of your eye (uveitis). Call your doctor right away if you have blurriness, shadows, or a blind spot in the center of your vision; sensitivity to light; or unusually colored vision.
- Swelling and narrowing of the blood vessels in your brain. A condition called PRES (posterior reversible encephalopathy syndrome) has happened rarely in adults taking GILENYA. Symptoms of PRES usually get better when you stop taking GILENYA. However, if left untreated, it may lead to a stroke. Call your doctor right away if you experience any symptoms, such as sudden severe headache, sudden confusion, seizures, or sudden loss of vision.
  - Liver damage. Your doctor should do blood tests to check your liver before you start GILENYA and periodically during treatment. Call your doctor right away if you have nausea, vomiting, stomach pain, tiredness, loss of appetite, dark urine, or if your skin or the whites of your eyes turn yellow.
  - Breathing problems. Some patients have shortness of breath. Call your doctor right away if you have trouble breathing.
  - Severe worsening of MS after stopping GILENYA. Many people who have worsening of MS symptoms after stopping GILENYA do not return to the level of function that they had before or during treatment with GILENYA. This can also occur in women stopping due to pregnancy or planning a pregnancy. This worsening happens most often within 12 weeks

**Please see full Important Safety Information on pages 10-11 and 14.**  
**Please see full Prescribing Information, including Medication Guide.**

after stopping GILENYA, but can happen later. Do not stop taking GILENYA without talking with your doctor. Tell your doctor if you have worsening symptoms of MS after stopping GILENYA.

- Increases in blood pressure (BP). BP should be monitored during treatment.
- Cancers including basal, squamous, and Merkel cell carcinomas and melanoma. Tell your doctor if you have any changes in the appearance of your skin, including changes in a mole, new darkened area in your skin, a sore that does not heal, or growths on your skin such as a bump that may be shiny, pearly white, skin colored, or pink. While taking GILENYA, limit the amount of time you spend in sunlight and ultraviolet (UV) light as well as use sunscreen with a high sun protection factor and wear protective clothing. Lymphoma has also occurred in patients receiving GILENYA.

GILENYA may harm your unborn baby. Talk to your doctor if you are pregnant or planning to become pregnant. Women should stop taking GILENYA 2 months before trying to become pregnant. Women who can become pregnant should use effective birth control while on GILENYA, and for at least 2 months after stopping. If you become pregnant while taking GILENYA, or within 2 months after stopping, tell your doctor right away. It is not known if GILENYA passes into breast milk. Talk to your doctor about the best way to feed your baby if you take GILENYA. A pregnancy registry is available for women who become pregnant during GILENYA treatment. For more information, contact the GILENYA Pregnancy Registry by calling Quintiles at 1-877-598-7237, by e-mailing [gpr@quintiles.com](mailto:gpr@quintiles.com), or by going to [www.gilenyapregnancyregistry.com](http://www.gilenyapregnancyregistry.com).

Tell your doctor about all your medical conditions, including if you had or now have an irregular or abnormal heartbeat; stroke or mini-stroke; heart problems; a history of repeated fainting; a fever or infection, or if you are unable to fight infections due to a disease or are taking medicines that lower your immune system,

### **IMPORTANT SAFETY INFORMATION (cont)**

including corticosteroids, or have taken them in the past; eye problems; diabetes; breathing or liver problems; or uncontrolled high blood pressure. Also tell your doctor if you have had chicken pox or have received the chicken pox vaccine. Your doctor may test for the chicken pox virus, and you may need to get the full course of the chicken pox vaccine and wait 1 month before starting GILENYA. Children 10 years and older should complete their vaccination schedule before starting GILENYA.

If you take too much GILENYA, call your doctor or go to the nearest hospital emergency room right away.

Tell your doctor about all the medicines you take or have recently taken, including prescription and over-the-counter medicines, vitamins, and herbal supplements.

The most common side effects with GILENYA were headache, abnormal liver tests, diarrhea, cough, flu, sinusitis, back pain, abdominal pain, and pain in arms or legs.

In the pediatric study:

- The safety in children 10 years and older receiving GILENYA was similar to that seen in adults.
- The rate of seizures was higher in GILENYA-treated patients compared to that of a leading injectable.

You are encouraged to report negative side effects of prescription drugs to the FDA. Visit [www.fda.gov/medwatch](http://www.fda.gov/medwatch) or call 1-800-FDA-1088.

**“ I’VE BEEN TAKING  
GILENYA® (fingolimod)  
FOR YEARS AND  
HAVEN’T HAD A  
RELAPSE SINCE.  
GILENYA IS GREAT  
FOR THOSE WHO  
PREFER A PILL.”**

– GILENYA COMMUNITY MEMBER  
This community member was paid for their time.  
Individual results may vary.

**Please see additional Important Safety Information on pages 10-13.  
Please see full Prescribing Information,  
including Medication Guide.**



# FIGHT BACK WITH **GILENYA**<sup>®</sup> (fingolimod)



*Get answers to frequently  
asked questions*



## *Need support?*

Call us at 1-800-GILENYA  
(1-800-445-3692), 8:00 AM–9:00 PM  
ET, Mon–Fri.\*

## *Join our online communities!*



[facebook.com/GilenyaGO](https://facebook.com/GilenyaGO)



[instagram.com/Gilenya\\_Fingolimod\\_Go](https://instagram.com/Gilenya_Fingolimod_Go)

\*Excludes public holidays.

GILENYA is a registered trademark of Novartis AG.  
GO PROGRAM is a registered trademark of Novartis AG.

